

# \$789,000

## Lincoln

Lot 376 Earlsbrook

Dwelling Size 160 m<sup>2</sup>  
Section Size 430 m<sup>2</sup>



3



2



2



1



2



Artist Impression Only

## For Sale

This modern three double bedroom, two bathroom home offers spacious open plan living and a sun filled north facing section that is fully landscaped and perfect for relaxing or entertaining. All bedrooms are well appointed, including a master with a tiled shower in the ensuite, while the home is finished to a high standard with quality fixtures and fittings throughout. Complete with an internal access double garage, all driveways and fencing are included in the sale price.

Nestled in the south side of Lincoln, Earlsbrook has everything you need close by, including a new primary school, local parks, a central shopping centre, and breathtaking views of the Port Hills and Southern Alps. New housing will range from family homes to townhouse living and retirement options, ensuring we cater to a broad spectrum of residents. The brand-new Earlsbrook subdivision is more than a smart investment. By moving to Lincoln, you're joining a charming, established, semi-rural community that values family and sustainability.

### More features

- Godfrey Hirst Flooring
- Samsung Appliances
- Stone Benchtop
- Tiled Floors to Wet Areas
- Tiled Shower

### Turn Key

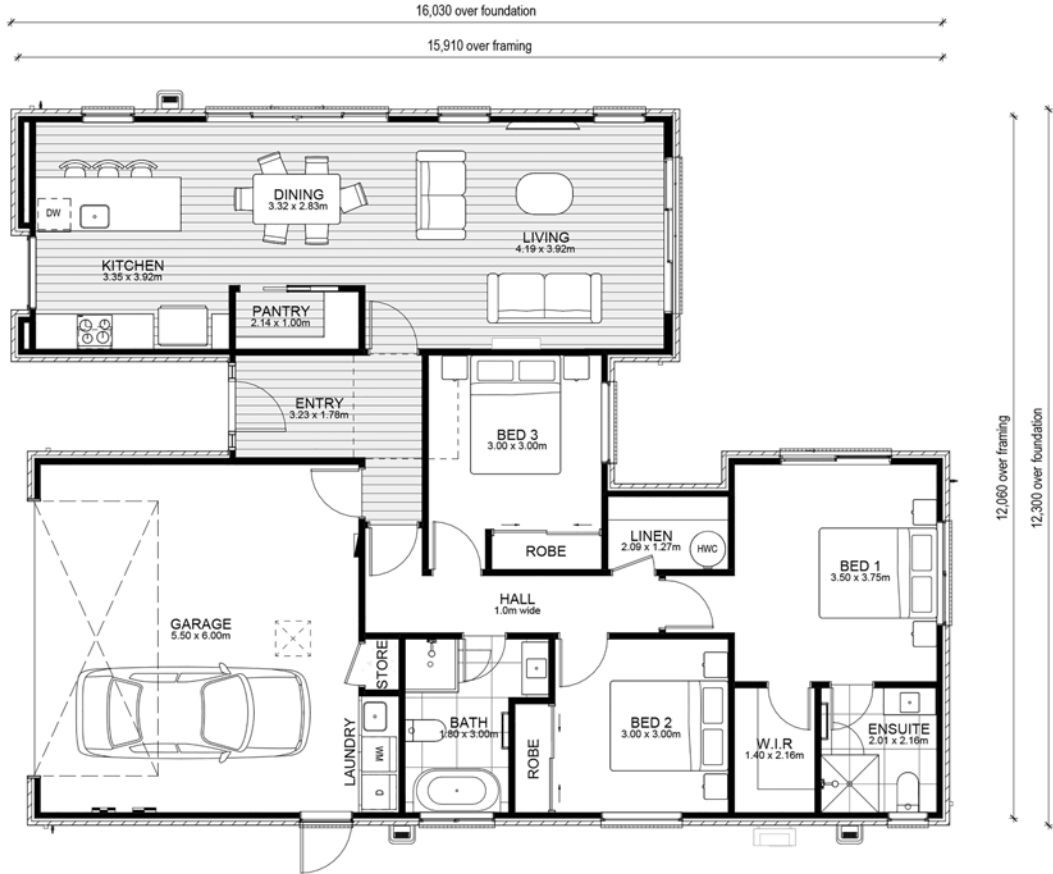
A Turn Key home is an all-inclusive package that requires up to a 10% deposit.

# Lincoln

Lot 376 Earlsbrook

SL1448

Dwelling Size 160 m<sup>2</sup>  
 Section Size 430 m<sup>2</sup>



## After Sales Care

At Mike Greer Homes we are committed to making the build journey as stress-free as possible. Our After Sales Care programme addresses any maintenance issues and ensures that any remedial work is undertaken once it is logged and approved.



Disclaimer. While every reasonable effort has been made by Mike Greer Homes to ensure the information correctly illustrates the dwelling and section, this material may only be used by the Purchaser for illustrative and guidance purposes. Mike Greer Homes accepts no responsibility for any differences, errors or omissions which may become apparent during or on completion of the dwelling.