

\$849,000

Lot 61, Earlsbrook

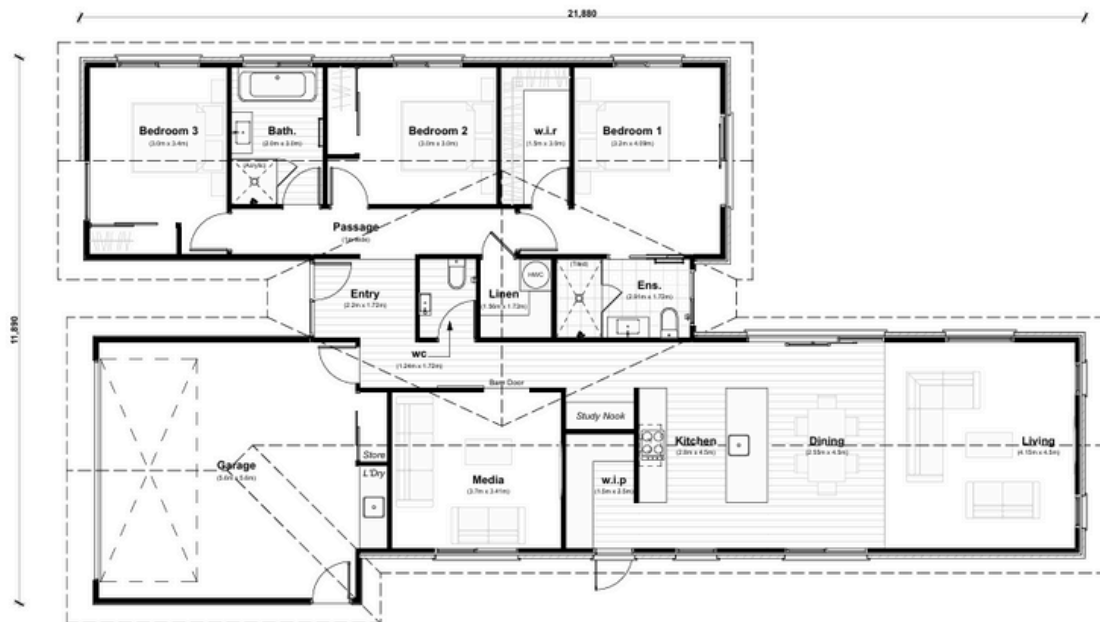


*artist impression

Floor area: 190m²
Land area: 638m²

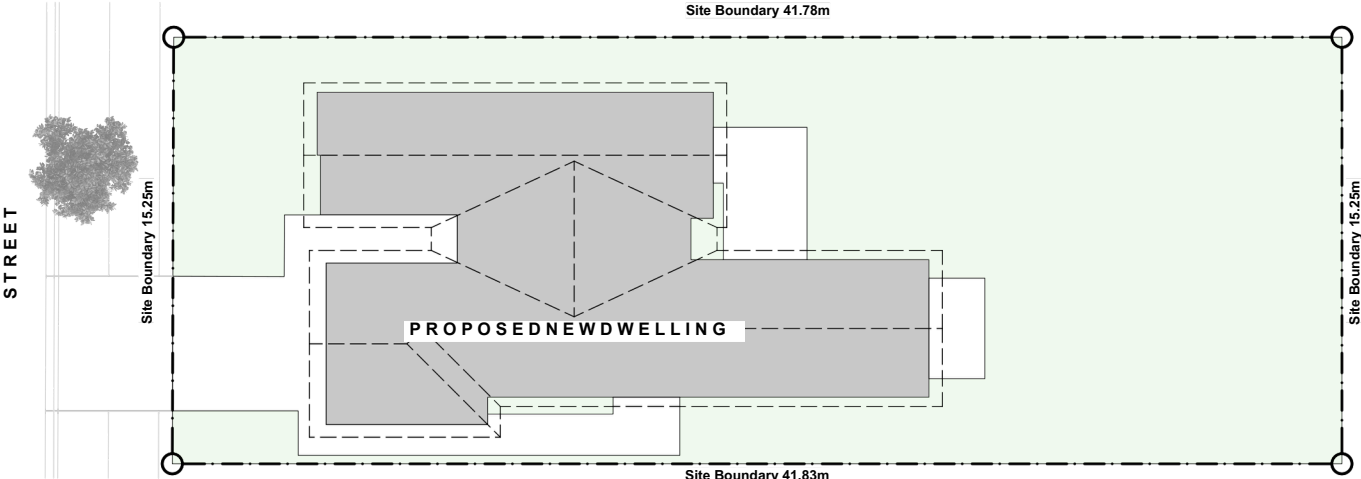


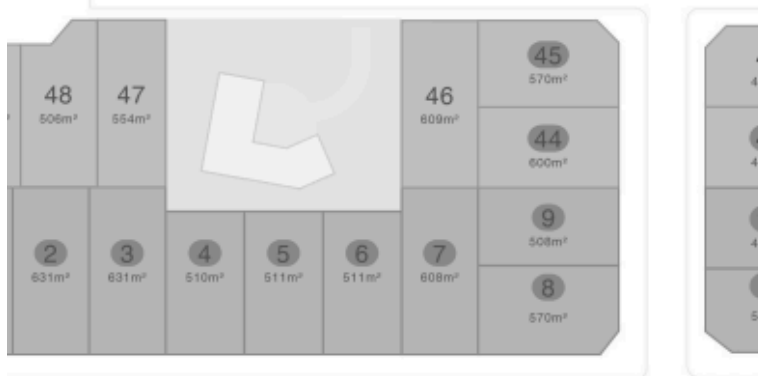
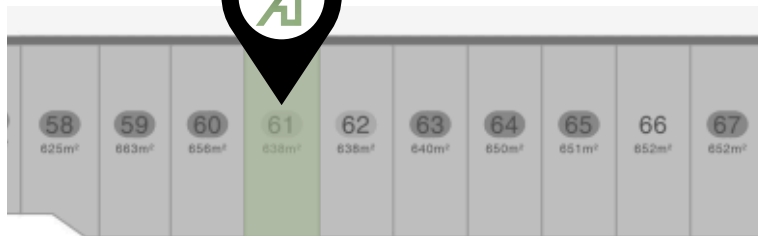
**Absolute
Homes**



Site Plan.

Lot 61, Earlsbrook





Boulevard



EARLSBROOK

This House & Land Package Includes...



10-YEAR HALO GUARANTEE



FIXED-PRICE CONTRACT



BOUNDARY FENCING



HEALTHY HOMES



1-YEAR SERVICE WARRANTY



Our standard.

Hard landscaping

All our builds come complete with hard landscaping, including driveways, patios, and pathways.



**Image is indicative only. Pictured is one of our previous builds*



What's included. **Scissor Trusses**

Scissor trusses through the kitchen, dining, and living area adds a sense of spaciousness and architectural flair, enhancing natural light and creating an open, airy feel.



*Image is indicative only. Pictured is one of our previous builds



Our standard.
Engineered stone benchtops

Your kitchen, walk in pantry,
and laundry will be fitted out
with engineered stone
benchtops.



**Image is indicative only. Pictured is one of our previous builds*



Our standard.

Wall hung vanity

With 12 different finishes to choose from, your bathroom will look fabulous with a wall hung vanity included as a standard feature.





What's included.

Barn door

This package features a statement barn door that adds both style and character to your living space.



**Image is indicative only*



Our standard.

Wardrobe shelves & rails

All wardrobes in rooms come fitted with shelves & rails for convenient storage.



**Image is indicative only. Pictured is one of our previous builds*



Our standard.

Smart lock

Every house comes with a smart lock where you can enter your home via fingerprint scan, personalised PIN code, RFID key tag or simply via your phone.





What's included.
Interior design consultation

You'll meet with our talented designer who will help you with the exciting process of personalising your new home's colours and materials.





What's included. **Tiled ensuite shower**

*This package includes a tiled ensuite shower with the choice of either a shower **niche**, or a shower **shelf** - adding a touch of luxury to your ensuite.*

Niche option



Shelf option





What's included.
Bosch kitchen appliances

Your new home will be fitted out with premium Bosch kitchen appliances including an oven, dishwasher, rangehood & cooktop.





Our standard.

Tiling in main bathroom

Enhance your main bathroom with a luxurious tiled feature wall behind the bath and above the vanity.





What's included.
Built-in Laundry

Enjoy the convenience of a seamlessly integrated built-in laundry, complete with stylish wall tiling for a modern and functional finish.



*Image is indicative only. Pictured is one of our previous builds

THE *absolute* SERVICE PROMISE.



Quality Workmanship.

We take pride in our very own skilled team of qualified carpenters, who work alongside trusted subcontractors to complete your build with excellence.



Fixed-Price Contract.

Absolute Homes will ensure your concept plan is comprehensive and all details including your spec items are explained before agreeing on a fixed-price for your build.



Communication & Transparency.

We believe great two-way communication is the key to a strong client-builder relationship, and ensuring you enjoy the home-building process.



Kindness & Values.

We do what we say we will and whatever it takes, we deliver on our promises.

Dedicated to bringing your dream home to life.

Did you know this plan can be fully customised to suit your lifestyle? With our **FREE design service**, you can add a bedroom, move the bathroom, or even create another lounge – it's completely up to you. Or start from scratch and design something entirely unique to your needs and budget.



027 292 3080
hayley@absolutehomes.co.nz



021 229 2442
danny@absolutehomes.co.nz





 **Absolute
Homes**

Proudly

**designing & building
warm, quality homes
in Canterbury.**

Danny
M: 021 229 2442
E: danny@absolutehomes.co.nz

Hayley
M: 027 292 3080
E: hayley@absolutehomes.co.nz

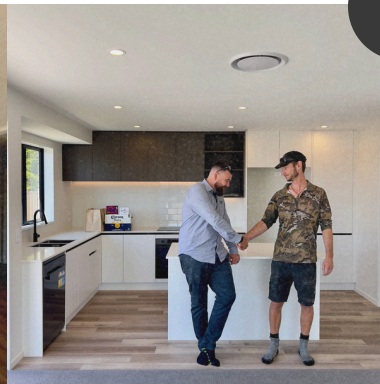


SITSAFE
MEMBER



Free Design & Concept Plans

VISIT OUR WEBSITE
www.absolutehomes.co.nz





Showhome

Location

15 McGarry Drive, Beachgrove
Kaiapoi

Hours

Sunday - Thursday (by
appointment only)
Friday & Saturday 12pm - 4pm

Contact

Hayley - 027 292 3080
hayley@absolutehomes.co.nz

Danny - 021 229 2442
danny@absolutehomes.co.nz





Proudly Local.

