

\$849,000

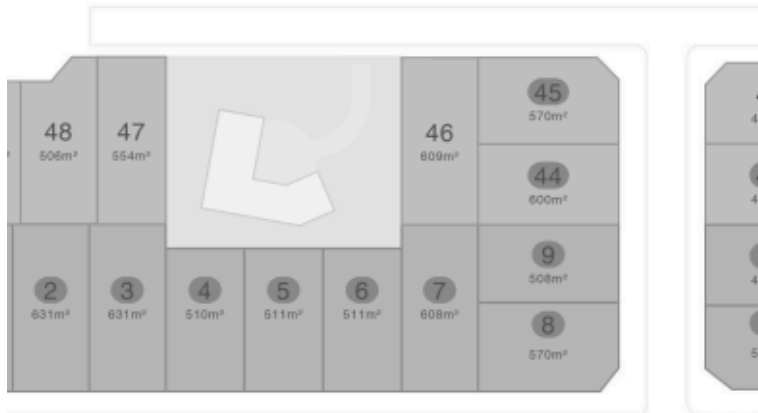
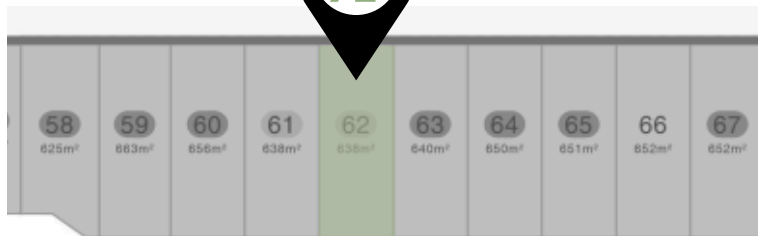
Lot 62, Earlsbrook



*artist impression

Land area: 638m²

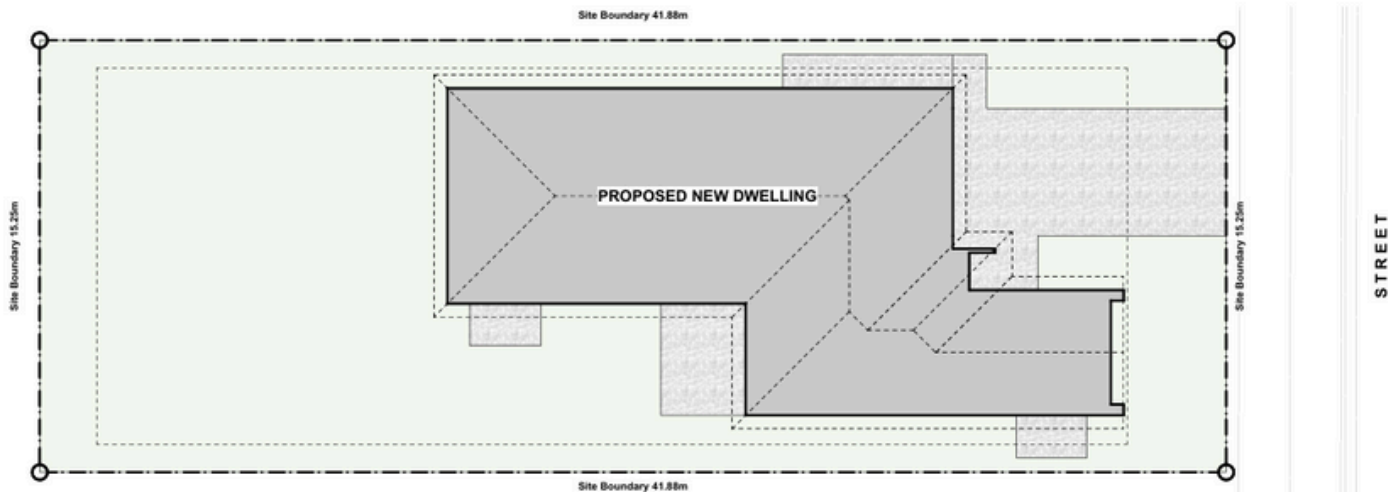




Boulevard



Site plan.



THIS HOUSE & LAND PACKAGE INCLUDES...



10-YEAR HALO GUARANTEE



FIXED-PRICE CONTRACT



BOUNDARY FENCING



HEALTHY HOMES



1-YEAR SERVICE WARRANTY





Our standard.

Hard landscaping

All our builds come complete with hard landscaping, including driveways, patios, and pathways.



**Image is indicative only. Pictured is one of our previous builds*



Our standard.
Engineered stone benchtops

Your kitchen, walk in pantry,
and laundry will be fitted out
with engineered stone
benchtops.





Our standard.

Wall hung vanity

With 12 different finishes to choose from, your bathroom will look fabulous with a wall hung vanity included as a standard feature.





Our standard.

Wardrobe shelves & rails

All wardrobes in rooms come fitted with shelves & rails for convenient storage.



**Image is indicative only. Pictured is one of our previous builds*



Our standard.

Smart lock

Every house comes with a smart lock where you can enter your home via fingerprint scan, personalised PIN code, RFID key tag or simply via your phone.





What's included.
Interior design consultation

You'll meet with our talented designer who will help you with the exciting process of personalising your new home's colours and materials.





What's included.
Tiled ensuite shower

*This package includes a tiled ensuite shower with a shower **niche** - adding a touch of luxury to your ensuite.*



**Image is indicative only. Pictured is one of our previous builds*



What's included.
Bosch kitchen appliances

Your new home will be fitted out with premium Bosch kitchen appliances including an oven, dishwasher, rangehood & cooktop.



**Image is indicative only*



Our standard.

Tiling in main bathroom

Enhance your main bathroom with a luxurious tiled feature wall behind the bath and above the vanity.



THE *absolute* SERVICE PROMISE.



Quality Workmanship.

We take pride in our very own skilled team of qualified carpenters, who work alongside trusted subcontractors to complete your build with excellence.



Fixed-Price Contract.

Absolute Homes will ensure your concept plan is comprehensive and all details including your spec items are explained before agreeing on a fixed-price for your build.



Communication & Transparency.

We believe great two-way communication is the key to a strong client-builder relationship, and ensuring you enjoy the home-building process.



Kindness & Values.

We do what we say we will and whatever it takes, we deliver on our promises.



 **Absolute
Homes**

Proudly

**designing & building
warm, quality homes
in Canterbury.**

Chris
M: 021 0252 6021
E: chris@absolutehomes.co.nz

Hayley
M: 027 292 3080
E: hayley@absolutehomes.co.nz

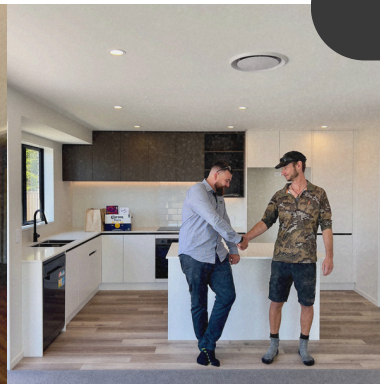


SITESAFe
MEMBER



Free Design & Concept Plans

VISIT OUR WEBSITE
www.absolutehomes.co.nz





**Absolute
Homes**

Show home

Location

15 McGarry Drive, Beachgrove
Kaiapoi

Hours

Sunday - Thursday (by
appointment only)
Friday & Saturday 12pm - 4pm

Contact

Hayley - 027 292 3080
hayley@absolutehomes.co.nz





Absolute Homes **Proudly Local.**

