

Dwelling Size 158 m²

Section Size 510 m²



3



2



2



1



2



About this home

This stylish show home showcases a well designed floor plan that balances comfort and functionality. Offering three double bedrooms, a family bathroom and ensuite, the home is finished with quality fixtures throughout. The North facing open plan kitchen, dining and living area forms the heart of the home, enhanced by striking scissor trusses and seamless flow to the fully landscaped outdoor entertaining space. Ducted heating ensures year round comfort, while a built-in sound system to the bedrooms adds a touch of modern luxury.

Nestled in the south side of Lincoln, Earlsbrook has everything you need close by, including a new primary school, local parks, a central shopping centre, and breathtaking views of the Port Hills and Southern Alps. New housing will range from family homes to townhouse living and retirement options, ensuring we cater to a broad spectrum of residents. The brand-new Earlsbrook subdivision is more than a smart investment. By moving to Lincoln, you're joining a charming, established, semi-rural community that values family and sustainability.

More features

- Alarm
- Carpet in Garage
- Ducted Heating
- Laundry Joinery
- Stone Benchtop
- Tiled Shower
- Undertile Heating in Ensuite

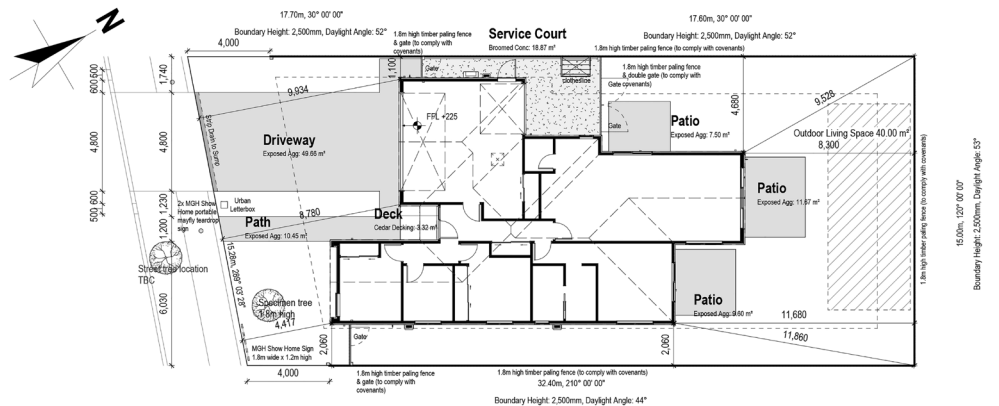
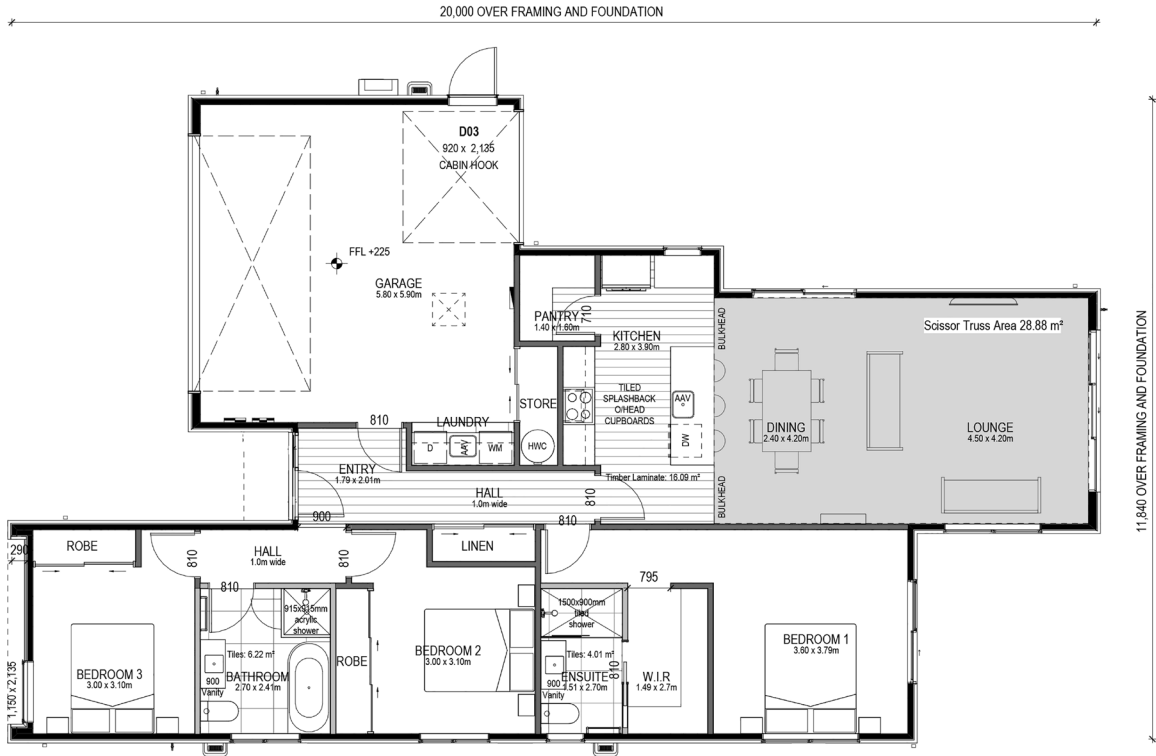
Lincoln

23 Earlsbrook Boulevard

SL1216

Dwelling Size 158 m²

Section Size 510 m²



Disclaimer. While every reasonable effort has been made by Mike Greer Homes to ensure the information correctly illustrates the dwelling and section, this material may only be used by the Purchaser for illustrative and guidance purposes. Mike Greer Homes accepts no responsibility for any differences, errors or omissions which may become apparent during or on completion of the dwelling.



03 339 7774 mikegreerhomes.co.nz