



EASTING	NORTHING	ELEVATION	DESCRIPTION
379583.99	792490.81	7.49	MA 2 - Masonry Anchor on top of kerb
379205.10	792609.52	10.22	MA 3 - Masonry Anchor on top of kerb
379344.24	792694.16	8.65	MA 4 - Masonry Anchor on top of kerb
379347.74	792591.75	8.96	MA 5 - Masonry Anchor on top of kerb
379415.21	792708.65	8.27	MA 8 - Masonry Anchor on top of kerb
379474.66	792693.45	8.01	MA 9 - Masonry Anchor on top of kerb
379536.98	792690.63	7.81	MA 10 - Masonry Anchor on top of kerb
379608.66	792704.20	7.53	MA 11 - Masonry Anchor on top of kerb
379481.23	792825.75	8.45	MA 12 - Masonry Anchor on top of kerb
379411.88	792827.90	8.69	MA 13 - Masonry Anchor on top of kerb
379546.51	792820.91	8.23	MA 14 - Masonry Anchor on top of kerb
379612.68	792817.34	7.84	MA 15 - Masonry Anchor on top of kerb
379597.47	792905.40	8.42	MA 16 - Masonry Anchor on top of kerb
379553.34	792906.65	8.68	MA 17 - Masonry Anchor on top of kerb
379415.00	792889.78	8.97	MA 18 - Masonry Anchor on top of kerb
379306.80	792895.03	9.29	MA 19 - Masonry Anchor on top of kerb
379217.83	792906.95	10.31	MA 20 - Masonry Anchor on top of kerb
379298.18	792997.84	9.91	MA 21 - Masonry Anchor on top of kerb
379424.18	792991.75	9.15	MA 22 - Masonry Anchor on top of kerb
379200.16	792509.70	10.54	MA 24 - Masonry Anchor on top of kerb
379209.71	792711.49	9.87	MA 25 - Masonry Anchor on top of kerb
379283.66	792598.17	9.26	MA 27 - Masonry Anchor on top of kerb
379346.32	792499.16	8.65	MA 29 - Masonry Anchor on top of kerb
379542.79	792986.37	8.67	MA 30 - Masonry Anchor on top of kerb
379609.24	792744.68	7.52	MA 34 - Masonry Anchor in kerb channel

NOTES

Horizontal Datum: NZGD2000 Mount Pleasant Circuit
Origin of Coordinates: SS 79 SO 5873-IT 0.3d [CNE3]

Vertical Datum: New Zealand Vertical Datum 2016
Origin of Height: SS 79 SO 5873-IT 0.3d [CNE3]

This survey control plan has been prepared for the purposes of Stage One of the Earlsbrook Residential Development only.

This control plan and coordinate listing is to be used solely by approved contractors and consultants working on Stage One of the Earlsbrook Residential Development. It is not to be shared or used for other purposes without prior written consent from Inovo Projects.

Any user of this plan must notify Inovo Projects immediately if any discrepancies or differences are identified.

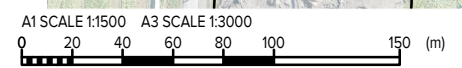
The contractor is responsible for ensuring all survey control marks are protected during construction. Should any marks be damaged, the contractor must notify Inovo Projects immediately.

Coordinates have been derived via processing of GNSS RTK observations and have a relative accuracies of +/-0.015m horizontal and +/-0.025m vertical. Contractors is to ensure coordinate accuracies are suitable for use.

Coordinates may vary from published values on the LINZ Geodetic Database due to development network adjustments.

LEGEND

MASONRY ANCHOR



Rev#	Description	Drawn	Date
C	CONTROL MARK "MA 27" ADDED	ZC	03.11.25
B	SI BDY'S ADDED	MHS	14.10.25
A	STAGE 1 INTERNAL CONTROL MARKS	ZC	13.10.25

INOVO

Level 1, 93 Manchester St, Christchurch 8022
Ph. 03 377 3290
Level 1, Shed 19, Princess Wharf, Auckland 1010
Ph. 09 600 1099
www.inovo.nz

Disclaimer: This document shall only be reproduced in full with approval from Inovo Projects Ltd.

Scale A1
1:1,500
Scale A3
1:3,000
DO NOT SCALE FROM DRAWING

Drawn
ZC
Approved
RT
Date
13.10.25

Client
EARLSBROOK LINCOLN

Project
EARLSBROOK RESIDENTIAL SUBDIVISION

Drawing Title
STAGE 1 INTERNAL SURVEY CONTROL OVERVIEW

Status
FOR INFORMATION

Drawing No.
15721-S-1001

Rev
C



NOTES

Horizontal Datum: NZGD2000 Mount Pleasant Circuit
Origin of Coordinates: SS 79 SO 5873-IT 0.3d [CNE3]
Vertical Datum: New Zealand Vertical Datum 2016
Origin of Height: SS 79 SO 5873-IT 0.3d [CNE3]

This survey control plan has been prepared for the purposes of Stage One of the Earlsbrook Residential Development only.

This control plan and coordinate listing is to be used solely by approved contractors and consultants working on Stage One of the Earlsbrook Residential Development. It is not to be shared or used for other purposes without prior written consent from Inovo Projects.

Any user of this plan must notify Inovo Projects immediately if any discrepancies or differences are identified.

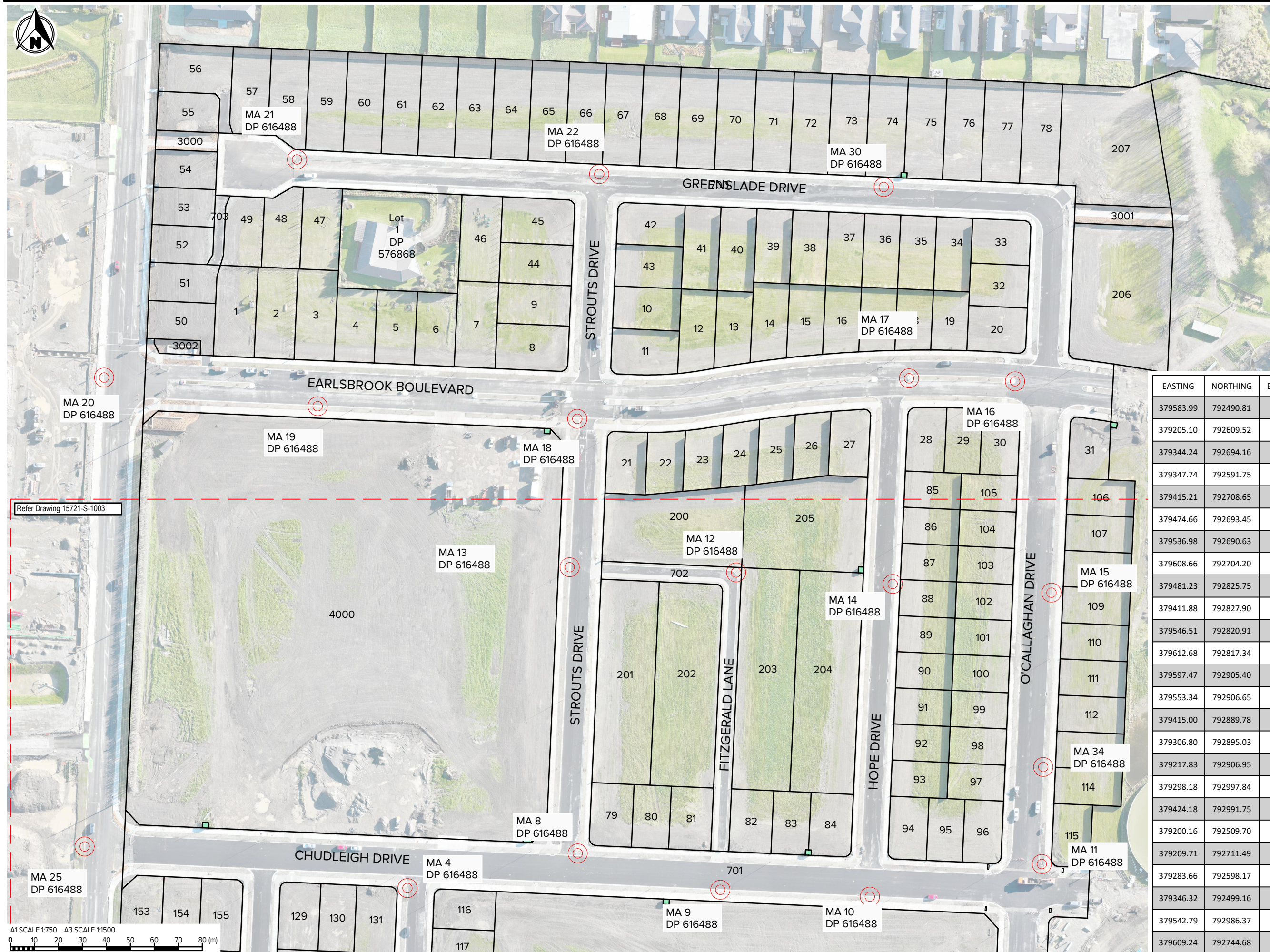
The contractor is responsible for ensuring all survey control marks are protected during construction. Should any marks be damaged, the contractor must notify Inovo Projects immediately.

Coordinates have been derived via processing of GNSS RTK observations and have a relative accuracies of +/-0.015m horizontal and +/-0.025m vertical. Contractors is to ensure coordinate accuracies are suitable for use.

Coordinates may vary from published values on the LINZ Geodetic Database due to development network adjustments.

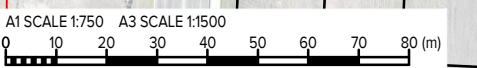
LEGEND

MASONRY ANCHOR



EASTING	NORTHING	ELEVATION	DESCRIPTION
379583.99	792490.81	7.49	MA 2 - Masonry Anchor on top of kerb
379205.10	792609.52	10.22	MA 3 - Masonry Anchor on top of kerb
379344.24	792694.16	8.65	MA 4 - Masonry Anchor on top of kerb
379347.74	792591.75	8.96	MA 5 - Masonry Anchor on top of kerb
379415.21	792708.65	8.27	MA 8 - Masonry Anchor on top of kerb
379474.66	792693.45	8.01	MA 9 - Masonry Anchor on top of kerb
379536.98	792690.63	7.81	MA 10 - Masonry Anchor on top of kerb
379608.66	792704.20	7.53	MA 11 - Masonry Anchor on top of kerb
379481.23	792825.75	8.45	MA 12 - Masonry Anchor on top of kerb
379411.88	792827.90	8.69	MA 13 - Masonry Anchor on top of kerb
379546.51	792820.91	8.23	MA 14 - Masonry Anchor on top of kerb
379612.68	792817.34	7.84	MA 15 - Masonry Anchor on top of kerb
379597.47	792905.40	8.42	MA 16 - Masonry Anchor on top of kerb
379553.34	792906.65	8.68	MA 17 - Masonry Anchor on top of kerb
379415.00	792889.78	8.97	MA 18 - Masonry Anchor on top of kerb
379306.80	792895.03	9.29	MA 19 - Masonry Anchor on top of kerb
379217.83	792906.95	10.31	MA 20 - Masonry Anchor on top of kerb
379298.18	792997.84	9.91	MA 21 - Masonry Anchor on top of kerb
379424.18	792991.75	9.15	MA 22 - Masonry Anchor on top of kerb
379200.16	792509.70	10.54	MA 24 - Masonry Anchor on top of kerb
379209.71	792711.49	9.87	MA 25 - Masonry Anchor on top of kerb
379283.66	792598.17	9.26	MA 27 - Masonry Anchor on top of kerb
379346.32	792499.16	8.65	MA 29 - Masonry Anchor on top of kerb
379542.79	792986.37	8.67	MA 30 - Masonry Anchor on top of kerb
379609.24	792744.68	7.52	MA 34 - Masonry Anchor in kerb channel

Refer Drawing 15721-S-1003



Rev#	Description	Drawn	Date
C	CONTROL MARK "MA 27" ADDED	ZC	03.11.25
B	IS1 BDY'S ADDED	IMHS	14.10.25
A	STAGE 1 INTERNAL CONTROL MARKS	ZC	13.10.25



Level 1, 93 Manchester St, Christchurch 8022
Ph. 03 377 3290
Level 1, Shed 19, Princess Wharf, Auckland 1010
Ph. 09 600 1099
www.inovo.nz

Scale A1 1:750
Scale A3 1:1,500
DO NOT SCALE FROM DRAWING

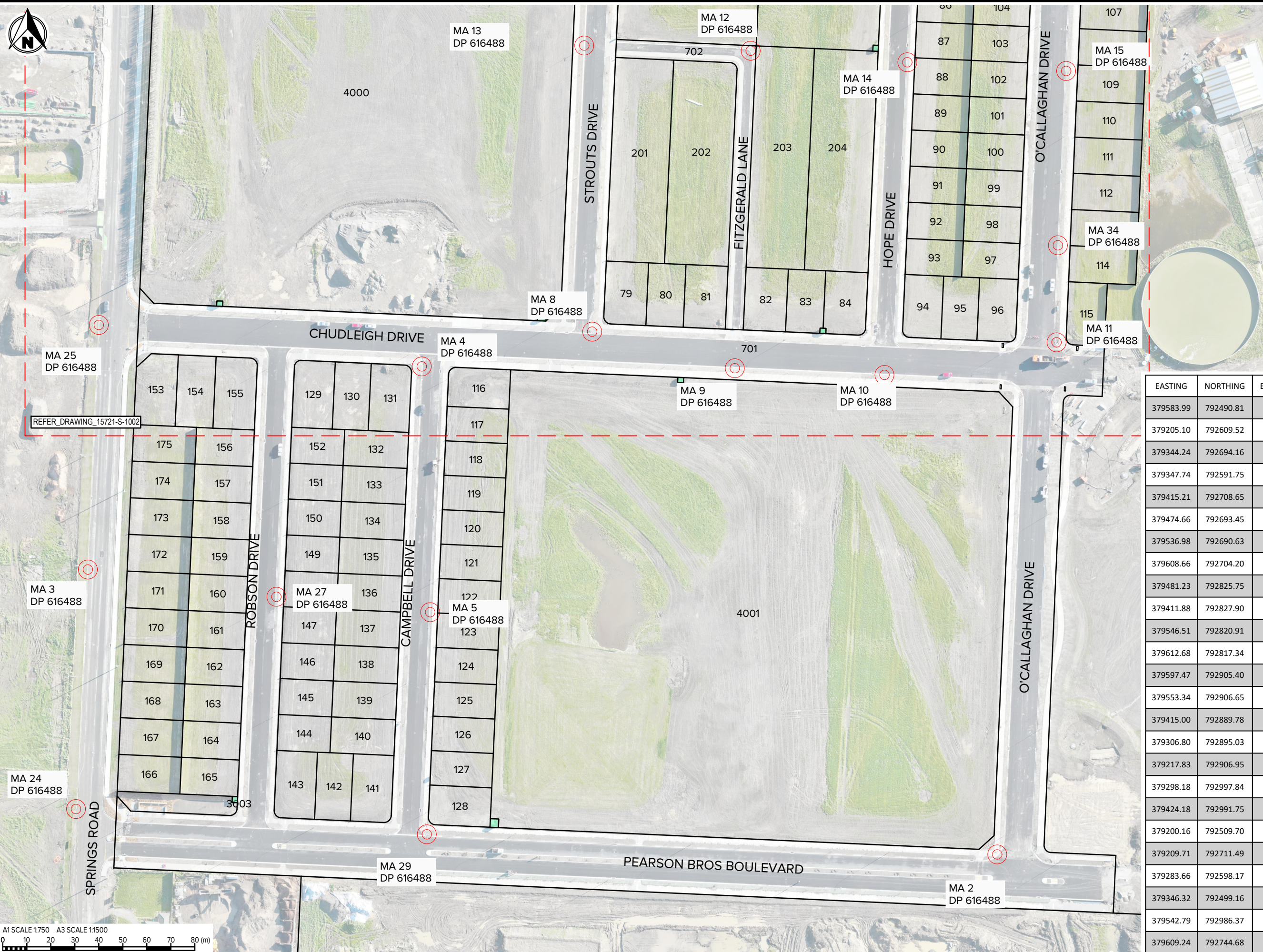
Drawn ZC
Approved RT
Date 13.10.25



Project **EARLSBROOK RESIDENTIAL SUBDIVISION**

Drawing Title **STAGE 1 INTERNAL SURVEY CONTROL SHEET 1**

Status **FOR INFORMATION**
Drawing No. **15721-S-1002**
Rev **C**



NOTES

Horizontal Datum: NZGD2000 Mount Pleasant Circuit
Origin of Coordinates: SS 79 SO 5873-IT 0.3d [CNE3]

Vertical Datum: New Zealand Vertical Datum 2016
Origin of Height: SS 79 SO 5873-IT 0.3d [CNE3]

This survey control plan has been prepared for the purposes of Stage One of the Earlsbrook Residential Development only.

This control plan and coordinate listing is to be used solely by approved contractors and consultants working on Stage One of the Earlsbrook Residential Development. It is not to be shared or used for other purposes without prior written consent from Inovo Projects.

Any user of this plan must notify Inovo Projects immediately if any discrepancies or differences are identified.

The contractor is responsible for ensuring all survey control marks are protected during construction. Should any marks be damaged, the contractor must notify Inovo Projects immediately.

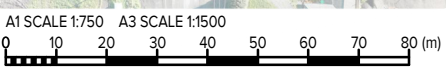
Coordinates have been derived via processing of GNSS RTK observations and have a relative accuracies of +/-0.015m horizontal and +/-0.025m vertical. Contractors is to ensure coordinate accuracies are suitable for use.

Coordinates may vary from published values on the LINZ Geodetic Database due to development network adjustments.

LEGEND

MASONRY ANCHOR

EASTING	NORTHING	ELEVATION	DESCRIPTION
379583.99	792490.81	7.49	MA 2 - Masonry Anchor on top of kerb
379205.10	792609.52	10.22	MA 3 - Masonry Anchor on top of kerb
379344.24	792694.16	8.65	MA 4 - Masonry Anchor on top of kerb
379347.74	792591.75	8.96	MA 5 - Masonry Anchor on top of kerb
379415.21	792708.65	8.27	MA 8 - Masonry Anchor on top of kerb
379474.66	792693.45	8.01	MA 9 - Masonry Anchor on top of kerb
379536.98	792690.63	7.81	MA 10 - Masonry Anchor on top of kerb
379608.66	792704.20	7.53	MA 11 - Masonry Anchor on top of kerb
379481.23	792825.75	8.45	MA 12 - Masonry Anchor on top of kerb
379411.88	792827.90	8.69	MA 13 - Masonry Anchor on top of kerb
379546.51	792820.91	8.23	MA 14 - Masonry Anchor on top of kerb
379612.68	792817.34	7.84	MA 15 - Masonry Anchor on top of kerb
379597.47	792905.40	8.42	MA 16 - Masonry Anchor on top of kerb
379553.34	792906.65	8.68	MA 17 - Masonry Anchor on top of kerb
379415.00	792889.78	8.97	MA 18 - Masonry Anchor on top of kerb
379306.80	792895.03	9.29	MA 19 - Masonry Anchor on top of kerb
379217.83	792906.95	10.31	MA 20 - Masonry Anchor on top of kerb
379298.18	792997.84	9.91	MA 21 - Masonry Anchor on top of kerb
379424.18	792991.75	9.15	MA 22 - Masonry Anchor on top of kerb
379200.16	792509.70	10.54	MA 24 - Masonry Anchor on top of kerb
379209.71	792711.49	9.87	MA 25 - Masonry Anchor on top of kerb
379283.66	792598.17	9.26	MA 27 - Masonry Anchor on top of kerb
379346.32	792499.16	8.65	MA 29 - Masonry Anchor on top of kerb
379542.79	792986.37	8.67	MA 30 - Masonry Anchor on top of kerb
379609.24	792744.68	7.52	MA 34 - Masonry Anchor in kerb channel



Rev#	Description	Drawn	Date
C	CONTROL MARK "MA 27" ADDED	ZC	03.11.25
B	SI BDY'S ADDED	MHS	14.10.25
A	STAGE 1 INTERNAL CONTROL MARKS	ZC	13.10.25

INOVO

Level 1, 93 Manchester St, Christchurch 8022
Ph. 03 377 3290
Level 1, Shed 19, Princess Wharf, Auckland 1010
Ph. 09 600 1099
www.inovo.nz

Disclaimer: This document shall only be reproduced in full with approval from Inovo Projects Ltd.

Scale A1
1:750

Scale A3
1:1,500

DO NOT SCALE FROM DRAWING

Drawn
ZC

Approved
RT

Date
13.10.25

Client

EARLSBROOK
LINCOLN

Project

EARLSBROOK
RESIDENTIAL SUBDIVISION

Drawing Title

STAGE 1
INTERNAL SURVEY CONTROL
SHEET 2

Status

FOR INFORMATION

Drawing No.
15721-S-1003

Rev
C