



# Today Homes

**Home Size:** 151m<sup>2</sup>

**Section Size:** 400m<sup>2</sup>

**Title:** Nov 2025

# Lincoln

Lot 170, Earlsbrook

## \$738,000



3



1



2



2



2



\*Artist impressions only. Finishes and details may vary.

## KEY FEATURES:

10 Year Master Build Guarantee

Pre-plumbed Fridge Connection

Low-E Argon-Filled Thermally Broken Windows

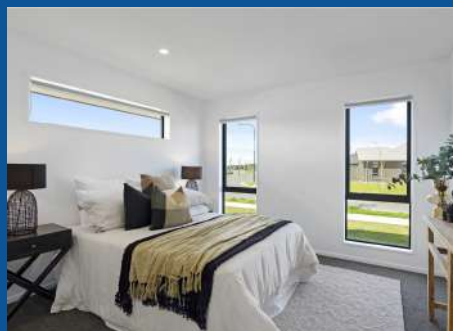
Aluminium Front Door

Windsor Garage Door

LED Lighting

Foundation, Wall/Roof Insulation H1 Compliant

Services, Consents & Related Fees included



P: 03 341 6460

E: [enquiries@todayhomes.co.nz](mailto:enquiries@todayhomes.co.nz)

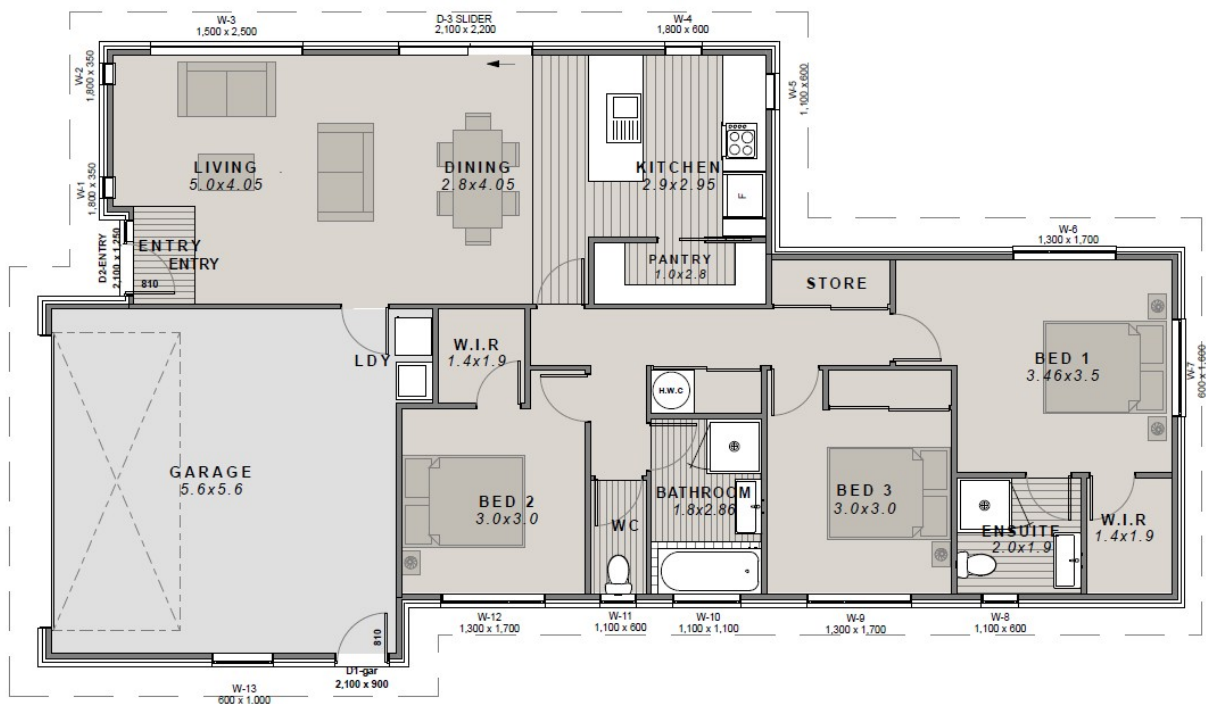
[www.todayhomes.co.nz](http://www.todayhomes.co.nz)

# Floor Plan



**Home Size: 151m<sup>2</sup>**

**Section Size: 400m<sup>2</sup>**



The CASHEL offers thoughtful family living with three bedrooms, including a master suite with a walk-in wardrobe and private ensuite. The open-plan kitchen, dining, and living area is perfect for entertaining, complemented by a walk-in pantry. A laundry nook in the internal access garage adds convenience, while the layout separates living spaces from bedrooms for privacy and comfort. With practical features and a functional flow, The Cashel balances style, comfort, and everyday convenience.

## THIS FLOOR PLAN INCLUDES:

Designer Kitchen with quality BOSCH Appliances

Open Plan Kitchen/Dining/Living Area

Stone Benchtop

Three Double Bedrooms

Family Bathroom with Separate WC

Ample Storage

Daikin Heat pump

Internal Access Double Garage



P: 03 341 6460

E: [enquiries@todayhomes.co.nz](mailto:enquiries@todayhomes.co.nz)

[www.todayhomes.co.nz](http://www.todayhomes.co.nz)