

# \$759,000

 **mikegreerhomes**

## Lincoln

Lot 100 Earlsbrook - Stage 1



Artist Impression Only

# for sale

dwelling size | section size  
155 m<sup>2</sup> | 355 m<sup>2</sup>

**homes  
for  
sale**

This stylish three-bedroom home has a north-facing living area to maximise sunlight throughout the day. Floor-length windows in the main living area open up the space, connecting to a large patio and creating the perfect backyard retreat. The home is finished to a high standard, showcasing the best modern fixtures throughout the kitchen and bathrooms. An internal access double garage, laundry joinery, and storage throughout the home keep things organised and tidy.

Nestled in the south side of Lincoln, Earlsbrook has everything you need close by, including a new primary school, local parks, a central shopping centre, and breathtaking views of the Port Hills and Southern Alps. New housing will range from family homes to townhouse living and retirement options, ensuring we cater to a broad spectrum of residents. The brand-new Earlsbrook subdivision is more than a smart investment. By moving to Lincoln, you're joining a charming, established, semi-rural community that values family and sustainability.

### more features.

- ✚ Designer Kitchen
- ✚ Ensuite
- ✚ Fully Landscaped
- ✚ Godfrey Hirst Flooring
- ✚ Stone Benchtop
- ✚ Designer Tapware
- ✚ Walk-in Wardrobe



**Turn Key**






A Turn Key home is an all-inclusive package that only requires 10% deposit.

bringing you more

03 354 0166

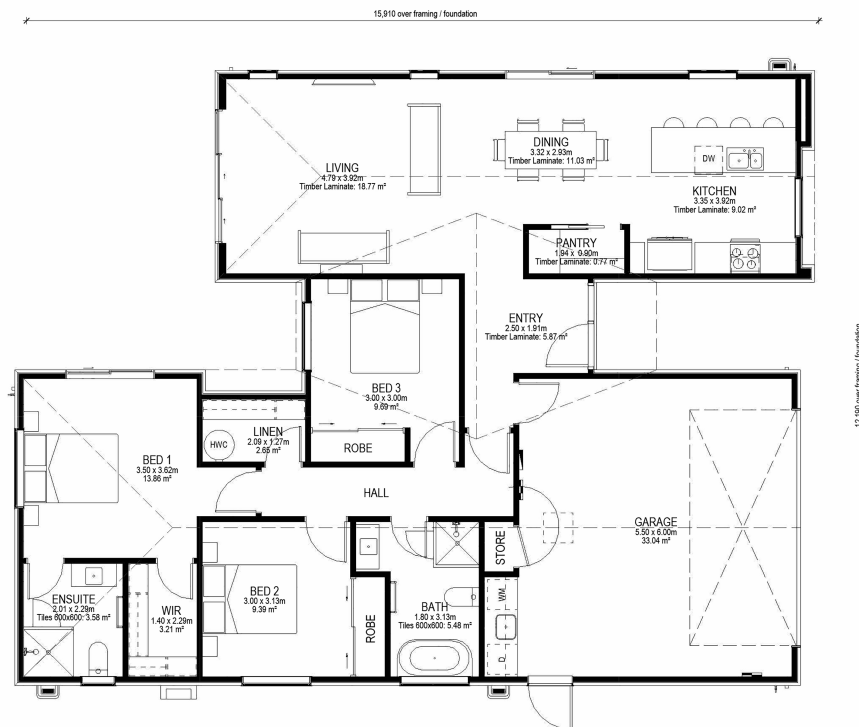
[mikegreerhomes.co.nz](http://mikegreerhomes.co.nz)

## Earlsbrook Lot 100 Earlsbrook - Stage 1

dwelling size	section size	3	2	2	1	2
155 m <sup>2</sup>	355 m <sup>2</sup>					



SL1219



### After Sales Care

At Mike Greer Homes we are committed to making the build journey as stress-free as possible. Our After Sales Care programme addresses any maintenance issues and ensures that any remedial work is undertaken once it is logged and approved.

Disclaimer. While every reasonable effort has been made by Mike Greer Homes to ensure the information correctly illustrates the dwelling and section, this material may only be used by the Purchaser for illustrative and guidance purposes. Mike Greer Homes accepts no responsibility for any differences, errors or omissions which may become apparent during or on completion of the dwelling.

